



The Hideaway 13 - 14 Woolleys Yard, Winster, Derbyshire, DE4 2DP

Saxton Mee



# The Hideaway 13 - 14 Woolleys Yard

Guide Price

## £475,000

£475,000 - £485,000 Guide Price.

This delightful 18th-century three-bedroomed cottage is nestled in a peaceful setting at the head of a charming courtyard, while also being centrally positioned in the heart of the popular and picturesque village of Winster. Formerly a candle factory, the property was converted in Victorian times and today retains a wealth of character and charm, including period fireplaces, exposed beamed ceilings and traditional stone-flagged flooring. The cottage enjoys the benefit of a charming garden and off-road parking, making it a rare opportunity within this sought-after village location.

Winster is a highly regarded Derbyshire village situated on the edge of the Peak District National Park, renowned for its strong community spirit, traditional limestone cottages and stunning surrounding countryside. The village offers a range of local amenities including a well-regarded primary school, village shop. Scenic walking and cycling routes are easily accessible from the doorstep and the nearby towns of Matlock, Bakewell, provide further shopping and leisure facilities.

The well presented accommodation comprises a breakfast kitchen fitted with a range of units, a Belfast sink and a pantry, with a spiral staircase leading to a first-floor bedroom. There is a dual-aspect dining room featuring a gritstone fireplace, alongside a dual-aspect sitting room with parquet flooring, a feature fireplace and a multi-fuel stove, creating warm and inviting living spaces.

To the first floor, the landing provides access to a double bedroom with built-in storage, a family bathroom, a further double bedroom and an adjoining bedroom which may also be accessed via the spiral staircase.

Externally, the cottage overlooks a lovely traditional cottage garden to the rear, laid out with planted beds and borders and providing a tranquil space for outdoor enjoyment. An outbuilding and store offers additional practical storage.

Off road parking.



- Brimming With Character Features
- Centrally Positioned
- Peaceful Courtyard Setting
- Generous Gardens With Outbuildings
- Thriving Village Community With Amenities
- Bordered By Spectacular Derbyshire Countryside
- Within Highly Regarded School Catchment
- Off Road Parking
- EPC: E
- Viewings: Bakewell Office

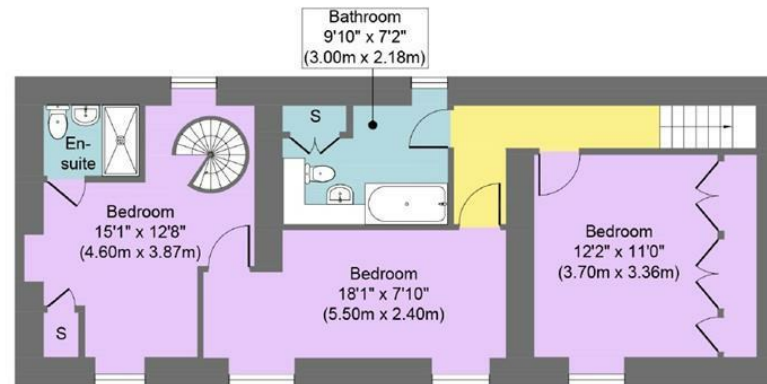




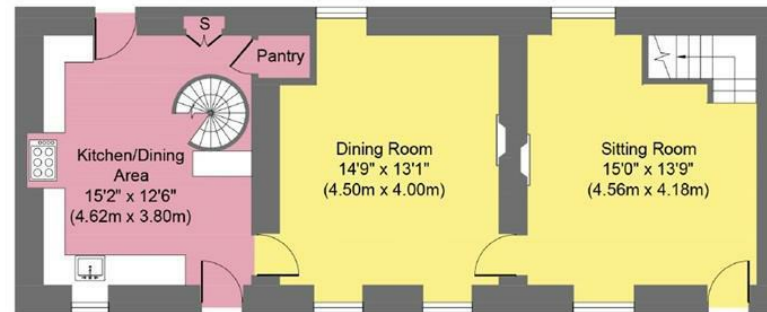




## The Hideaway, Wooleys yard, Winster, DE42DP



**First Floor**  
Approximate Floor Area  
642 sq. ft  
(59.70 sq. m)



**Ground Floor**  
Approximate Floor Area  
642 sq. ft  
(59.70 sq. m)

Illustration for identification purposes only, measurements are approximate, not to scale.

While we endeavour to make our sales particulars fair, accurate and reliable, they are only a general guide to the property and, accordingly, if there is any point, which is of particular importance to you, please contact the relevant office. The Agents have not tested any apparatus, equipment, fittings or services and so cannot verify they are in working order. The buyer is advised to obtain verification. Please note all the measurement details are approximate and should not be relied upon as exact. All plans, floor plans and maps are for guidance purposes only and are not to scale. Under no circumstances should they be relied upon as exact or for use in planning carpets and other such fixtures, fittings or furnishings. YOUR HOME IS AT RISK IF YOU DO NOT KEEP UP REPAYMENTS ON A MORTGAGE OR OTHER LOAN SECURED ON IT. 'A Life Assurance policy may be requested.' 'Written Quotations of credit terms available on request.'

Banner Cross  
T: 0114 268 3241  
E: [bannercross@saxtonmee.co.uk](mailto:bannercross@saxtonmee.co.uk)  
[www.saxtonmee.co.uk](http://www.saxtonmee.co.uk)

Hathersage  
T: 01433 650009  
E: [hathersage@saxtonmee.co.uk](mailto:hathersage@saxtonmee.co.uk)

Bakewell  
T: 01629 815307  
E: [bakewell@saxtonmee.co.uk](mailto:bakewell@saxtonmee.co.uk)

Matlock  
T: 01629 828250  
E: [matlock@saxtonmee.co.uk](mailto:matlock@saxtonmee.co.uk)

